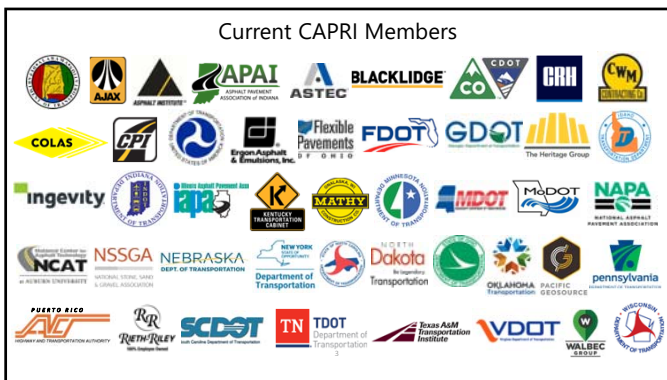




Vision for CAPRI

A forum that engages all stakeholders to advance asphalt pavement technologies through the development of **national research needs** and **implementation strategies**.

2



CAPRI Executive Committee

 Eric Biehl Ohio DOT Vice Chair	 Mark Buncher Asphalt Inst. Secretary	 Jim Marszal Flex. Pavts. of Ohio	 John Donahue Missouri DOT	 Jon Epps Texas A&M / TTI	 Katherine Erwin Walbec Group
 Leslie Myers FHWA	 David Mensching FHWA TFF liaison	 Mike Stanford Colorado DOT Treasurer	 Griffin Sullivan Mississippi DOT	 Kate Haslett DeCarlo Heritage Research Group	 Richard Willis NAPA Chair

4

CAPRI – Goals

1. Develop asphalt pavement research needs
2. Provide technical guidance on current and evolving issues
3. Facilitate small-scale studies to address gaps and explore new topics
4. Foster implementation of practical research findings from any source

5

CAPRI – Two-part funding model

- Public sector – pooled-fund for highway agencies
 - \$10,000/year base funding
 - Base funding covers travel for one representative
 - Additional funds may be added for agency directed work
- Private sector – all other organizations
 - \$6000 annual dues
 - Auburn University account
 - Does not include funds for travel
- Funds from both parts are managed the same way

6

Subcommittee Roles

Critical Issues

- Identify and prioritize aspects of asphalt pavement performance and sustainability that need to be improved (the Big Picture)
- Identify gaps, hurdles, and unclear aspects in existing policies, procedures and practices

Technology Evaluation

- Identify technologies and processes intended to improve asphalt pavement performance and sustainability
- Identify Technology Readiness Levels, gaps in knowledge, barriers to implementation
- Recommend strategies to move prioritized technologies toward implementation

Technology Transfer

- Identify research findings and best practices that are ready for implementation
- Recommend strategies to facilitate the transfer of those technologies into practice.

Research Roadmap

- Assemble recommendations of research and technology transfer needs from other CAPRI subcommittees and other sources
- Prioritize needs, develop research need statements and advocate for funding by appropriate organizations

7

Subcommittee Actions

Critical Issues

- Annual survey of CAPRI membership on topics of interest. Results summarized to identify priorities
- Consult with RR Subcommittee and develop preliminary RNSs, send to TE Subcommittee

Technology Evaluation

- Evaluate Technology Readiness Levels, gaps in knowledge, barriers to implementation
- Identify best place for funding the research need?
- Recommend high TRL topics move to Tech Transfer

Technology Transfer

- Develop and execute strategies to facilitate the transfer of high TRL topics into practice. Examples: webinars, workshops, best practice guides, videos.

Research Roadmap

- Develop the research database – a resource for sharing what research is in pipeline, underway, or already completed.
- Assemble RNSs from other subcommittees and advocate for funding.
- Recommend research synthesis topics

8

2022 Funds Available for Research & Implementation Activities

- Approx. \$600,000 available in 2023
- No more than 1/3 of available funding to a single project or activity
- Subcommittees may make recommendations to EC for small-scale studies, implementation activities, &/or technical advisories. Must be approved by majority of the subcommittee members.
- Process outlined in bylaws

9

Initial Research Database

Priority	Topic	Research Category Area(s)
1	Improving In-Place Density <ul style="list-style-type: none"> Technologies, measurements, benefits 	Production & Construction/LCCA
2	BMD Implementation <ul style="list-style-type: none"> Selecting mix performance tests, validation of BMD threshold, QC/QA variability, rapid testing for performance mix tests, impacts of performance tests on life cycle 	Mixture Design/ Production & Construction / LCCA
3	Longitudinal Joint Construction <ul style="list-style-type: none"> Effect of construction methods on long-term performance, evaluation of new products (e.g. VRAM, RPE) 	Production & Construction
4	Tack Coats <ul style="list-style-type: none"> Products and application methods evaluation, bond strength testing 	Production & Construction

10

Focus on One Topic per Meeting

- Improving In-Place Density
- Improving Longitudinal Joint Performance
- Balanced Mix Design

11

CAPRI Meetings

Spring & Fall Meetings

- Oct. 5-6, 2021 @ HRG
- March 10-11, 2022 @ NCAT
- Oct. 12-13, 2022 @ Ingevity



12

CAPRI Meetings



13

Next Meeting of CAPRI

March 7-8, 2023, Hosted by Astec Industries Inc., Chattanooga, TN



14

CAPRI – Two-part funding model

- Public sector – pooled-fund for highway agencies
 - \$10,000/year base funding
 - Base funding covers travel for one representative
 - Additional funds may be added for agency directed work
- Private sector – all other organizations
 - \$6000 annual dues
 - Auburn University account
 - Does not include funds for travel
- Funds from both parts are managed the same way

15

Additional State Directed Funds

- South Carolina DOT
 - SMA research project
 - Support travel for technical meetings
- North Dakota DOT
 - BMD validation study support
- Mississippi DOT
 - Field validation of stabilized layers for MEPDG

16

Thank You



Randy West
randy.west@auburn.edu